



Remote Control

Product/version/build:

Windows, Mac and Linux – version 12.73 (2018229)

Shipping date:

22nd of August 2018



Introduction

These modification notes contain information relating to a maintenance release of Netop Remote Control 12.70. Where applicable, the support case reference numbers are displayed below.

As a maintenance release, version 12.73 is free for customers who already have a valid 12.70 license. To read more about what's new in Netop Remote Control version 12.70, please refer to the Release Notes at www.netop.com.

If you have questions about your license or wish to purchase an upgrade to Netop Remote Control 12.70, please contact **Netop Customer Service** or your local **Netop Partner** for more information.

Whitelisted applications – centrally managed using Netop Security Server

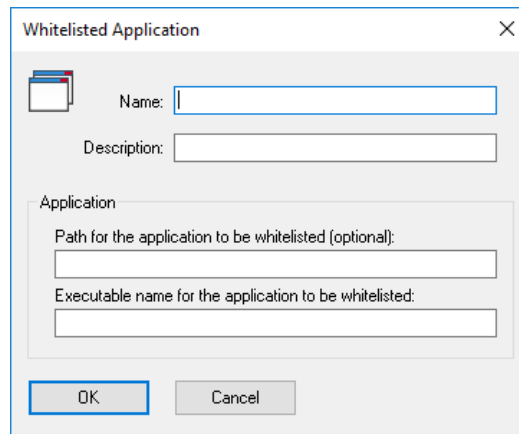
With this release, it is possible to configure one or multiple applications to be the only applications accessible in a Remote Control session while being centrally managed through the Netop Security Server. Whitelisting applications, using the configuration on the Host, has already been made available in NRC 12.72 (more information available in the [Release Notes](#)).

How to use with Netop Security Server

1. Open the Security Manager and go to **Netop Security Management > Security Settings > Applications**.
2. Add one or multiple applications that you would like to whitelist.



Netop™ is a trademark of Netop Business Solutions A/S. All other products mentioned in this document are trademarks of their respective manufacturers. Netop Business Solutions A/S denies any and all responsibility for damages caused directly or indirectly as a result of using this document. The content of this document is subject to change without notice.

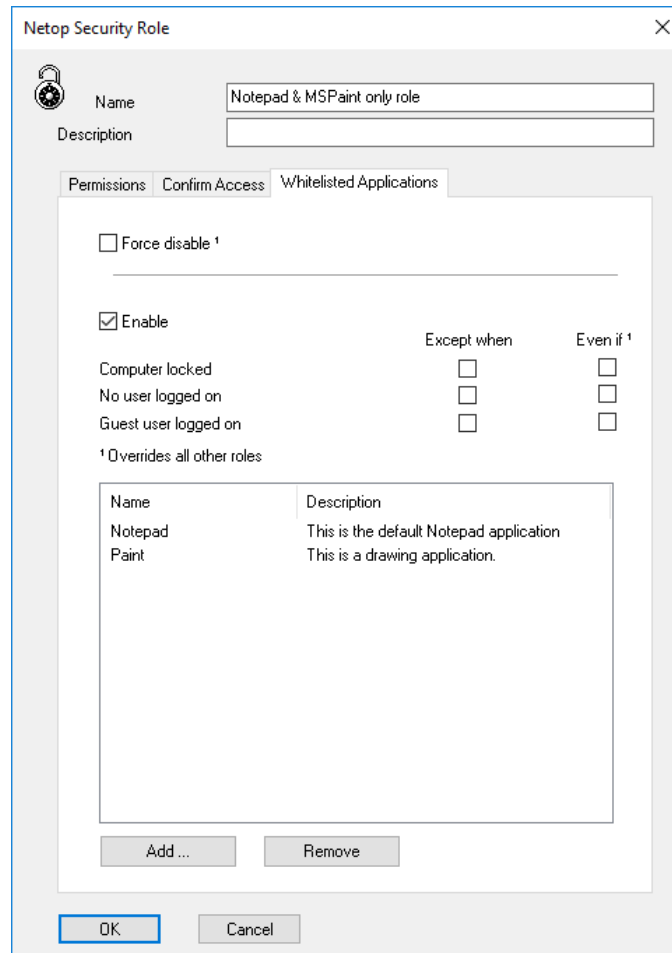


The 'Whitelisted Application' dialog box contains the following fields:

- Name:** A text input field.
- Description:** A text input field.
- Application:** A sub-section containing:
 - Path for the application to be whitelisted (optional):** A text input field.
 - Executable name for the application to be whitelisted:** A text input field.
- Buttons:** 'OK' and 'Cancel' buttons at the bottom.

Figure 1 - Add a new application

- When creating the **Role**, add the applications you would like to whitelist in the Whitelisted applications tab.



The 'Netop Security Role' dialog box shows the configuration for a role named 'Notepad & MSPaint only role'. It includes the following elements:

- Name:** Notepad & MSPaint only role
- Description:** (Empty field)
- Permissions:**
 - Force disable ¹
 - Enable
- Except when:**
 - Computer locked:
 - No user logged on:
 - Guest user logged on:
- Even if ¹:**
 - Computer locked:
 - No user logged on:
 - Guest user logged on:
- Footnote:** ¹ Overrides all other roles
- Whitelisted Applications Table:**

Name	Description
Notepad	This is the default Notepad application
Paint	This is a drawing application.
- Buttons:** 'Add ...', 'Remove', 'OK', and 'Cancel' buttons.

Figure 2 - Edit the role

- 4. Next time the Guest connects to the Host and the above Role applies, only the whitelisted applications will be visible.

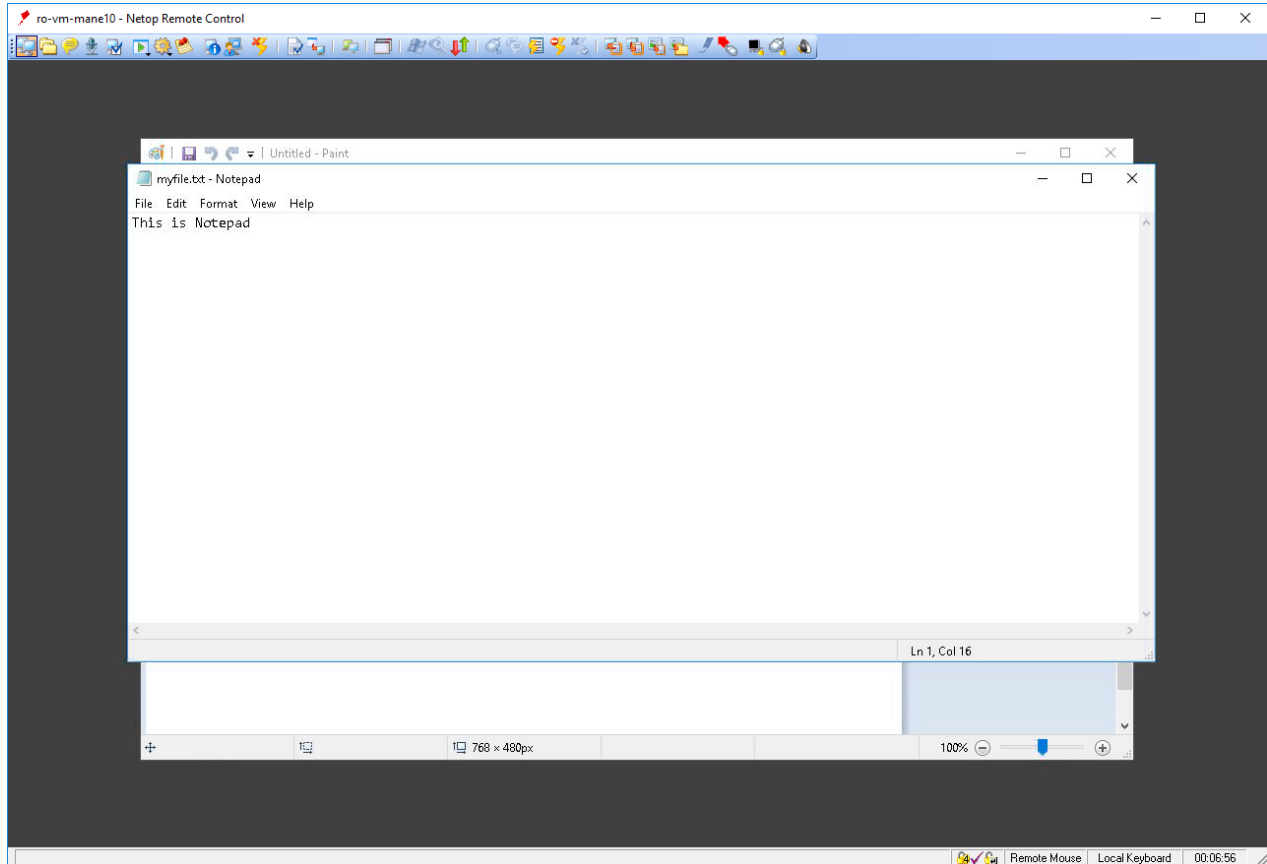


Figure 3 - Remote Control session

The Guest user can switch through the different whitelisted applications, either by just clicking on them (if visible on the screen) or by clicking the new button (📁) in the toolbar that displays a list of all whitelisted applications for that session.

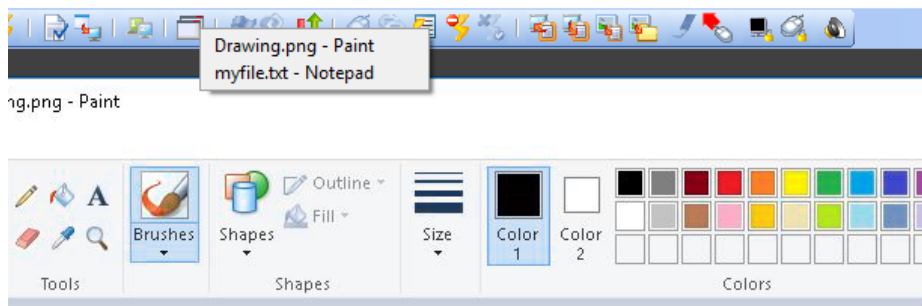


Figure 4 - Switching between apps

More information is available in the [Knowledge base](#) on how to configure whitelisted applications.

Mass deploy the Host configuration for whitelisted applications

Pack'n'Deploy provides an option to include the whitelisted application in the MSI + MST output. This is done by making whitelisted.txt available in the Configuration tab. By selecting it, the whitelisted applications configured on that Host will be mass deployed. This functionality needs an updated Netop Host MSI and Pack'n'Deploy (version 12.73).

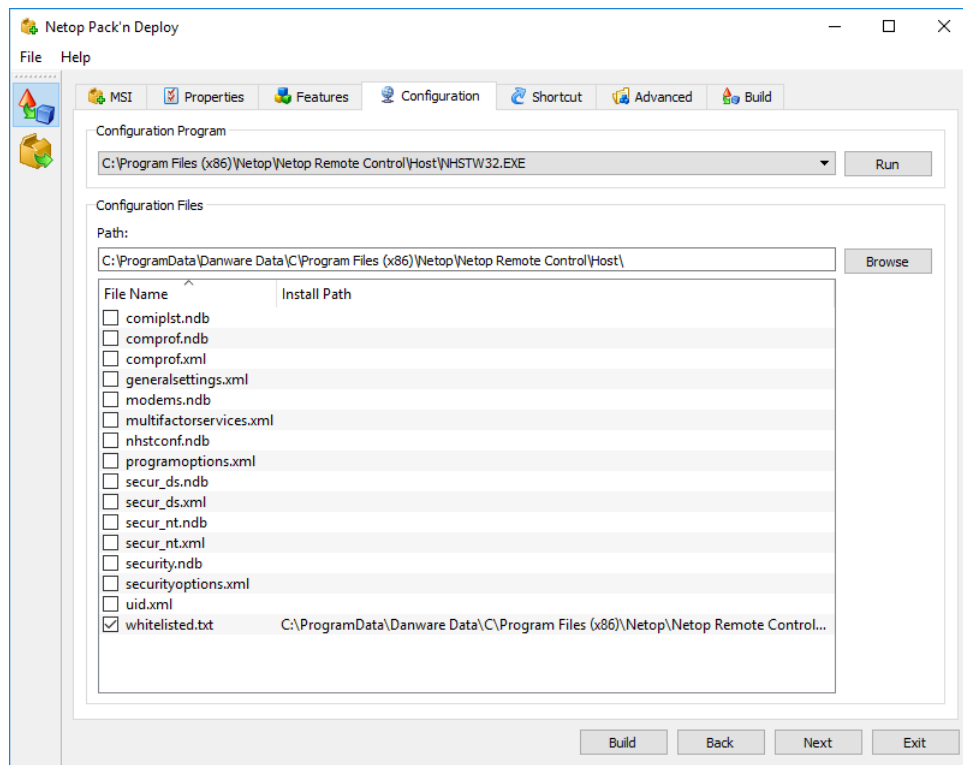


Figure 5 - Configuration tab

Netop Security Server - save logs to files

The event logs, which are saved to the Netop Security Server, can now be saved to log files. Once saved to log file, they can be imported into other systems, including syslog server using a syslog agent.

To turn this on, add the following to the Netop.ini file on the Netop Security Server machine.

[NSS]

NETOPLOG_DIRECTORY=[DIRECTORY_LOCATION]

NETOPLOG_FORMAT=%4.4d-%2.2d-%2.2d %2.2d:%2.2d:00, %s, %s, %s, %d, %d, %d

[DIRECTORY_LOCATION] needs to be replaced with the path in which the log files will be saved.

Ubuntu 18.04 LTS support

The Guest and Host running on Linux now support Ubuntu 18.04 LTS.

Portal notifications displayed in the Guest

With the latest update of the Netop Portal, the release notifications will also be displayed in the Guest running on Windows and Linux.

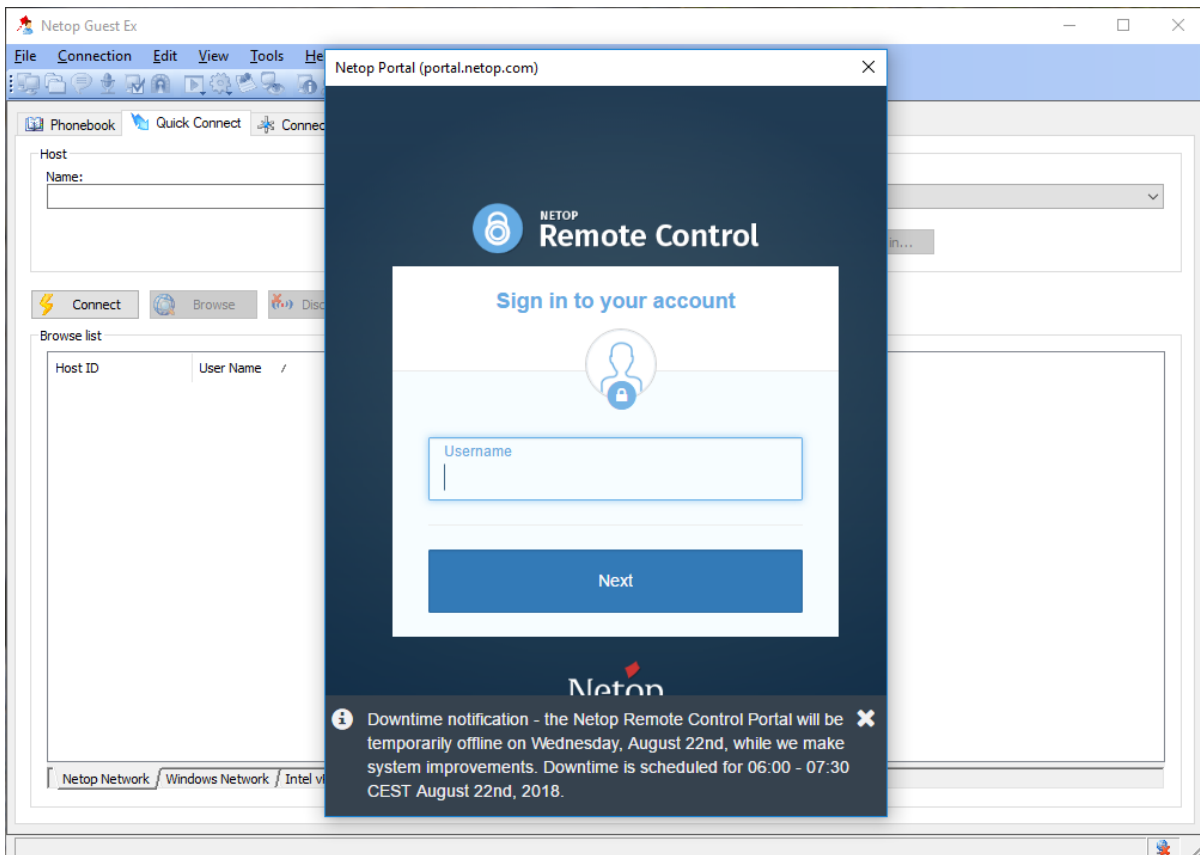


Figure 6 - Guest with notifications

Defects resolved

- The permission "Confirm access, except when computer is locked" is sometimes not properly working on Windows 10
Support case ref: NRC-13092
- RC_AreaEnable configuration option in netop.ini does not work correctly with negative coordinates
Support case ref: NRC-13080
- Confirm access is not set on multiple, cumulative roles.



Remote Control

Support case ref: NRC-13560

- Host is sometimes crashing on nonstandard screen resolution

Support case ref: NRC-13330

- The trial is not working when no license key is used in Linux Guest and Host 12.70, 12.71 and 12.72

Support case ref: NRC-13467



Netop™ is a trademark of Netop Business Solutions A/S. All other products mentioned in this document are trademarks of their respective manufacturers. Netop Business Solutions A/S denies any and all responsibility for damages caused directly or indirectly as a result of using this document. The content of this document is subject to change without notice.